



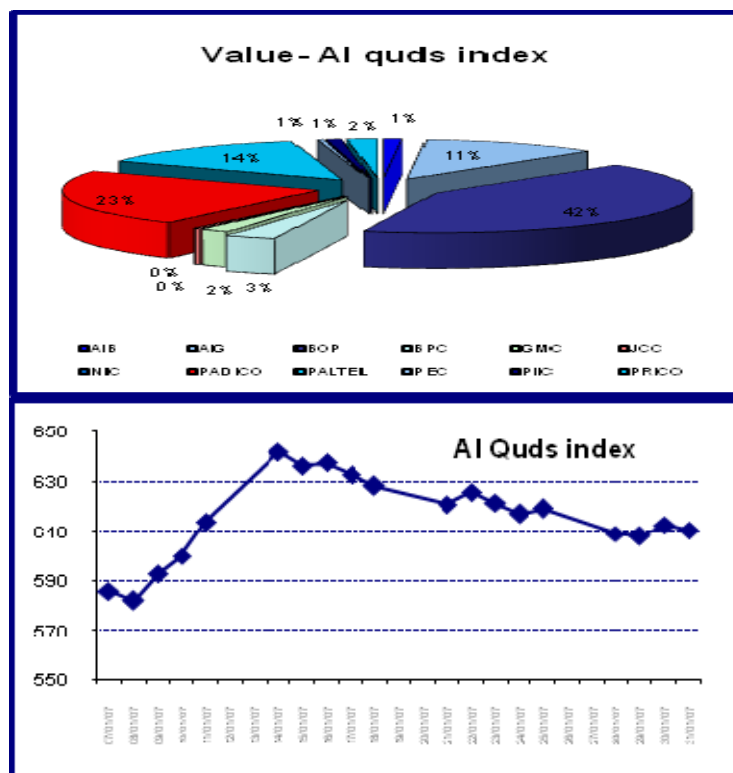
Sahem Trading & Investment Co.

**Monthly Performance Report for
Palestine Securities Exchange
January 2007**

Research Department

Al-Quds Index:

Al-Quds Index performance fluctuated this month breaking the 600 point barrier in its first session for this year, ending at the level of (582) points, synchronized by the worsening situation in the Gaza Strip and the Westbank due to internal conflicts. Only to return to the affirmative side with the end of the government officials strike which took place for 5 months in order to obligate the government to commit to the regular payment of salaries and also the payback of the salaries that were withheld for the last couple of months. After the emergence of signs of breakthrough in dialogues concerning the formation of a national unity government, the Index's shares rose to an obvious level of (642) point. The Palestinian situation remains in a tidal wave of unfortunate sporadic events witnessing dialogues between all parties. Hopefully the last agreement between Fatah and Hamas will be a candidate for endurance since it's supported formally and publically. As well as being a part of the Palestinian Dialogue in Mecca. Al-Quds Index was able to achieve a (0.92%) rise compared to this months sessions closing at (610.58) points after active trades of more than (26) million shares valuing (76.5) million dollars out of 12.515 contracts. In general (30) companies shares were traded. (13) of those companies achieved gain in profit, while (14) of them decline and the rest of the (3) remained the same with no change.

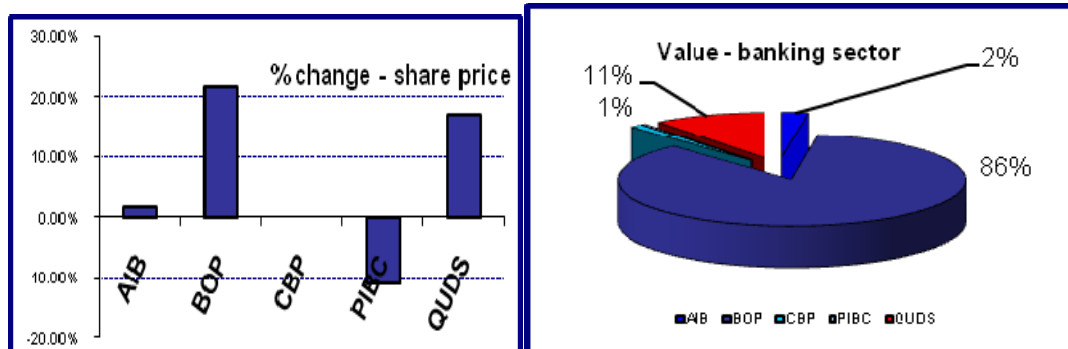


Banking Sector:

www.sahem-inv.com

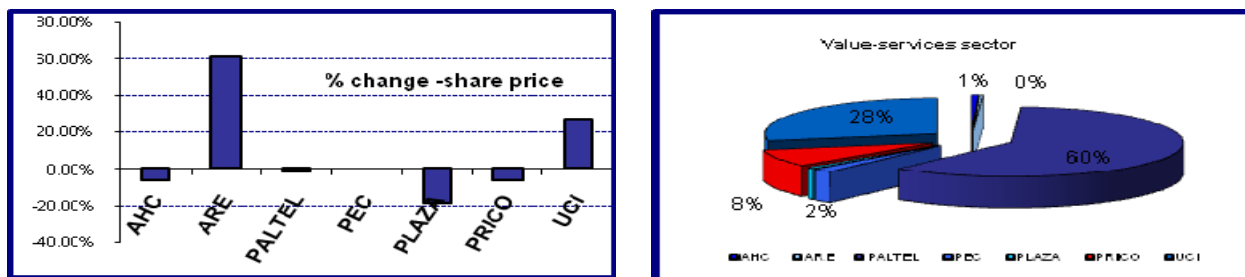
Main Office-Sahem Trading & Investment Co.-P.O Box: 2187 Ramallah-Phone: 02-2965710
Gaza-Phone: 08-2869660- Bethlehem-Phone: 02-2744672-Khan Younes-Phone: 08-2064910

The Banking Sector achieved the highest percentage of rises for this month by the help of (BOP) shares where it achieved an (8.46%) rise closing at the level of (103.28) points. The Banking Sector had (43%) of the PSE total value for this month, while (BOP) had (87%) of the overall trade value and more than (30%) of the PSE total value with affected trades of (5.12) million shares valuing (28.3) million dollars. The share closed at the level of (5.63) dollars which is a (21.6%) increase. (QUDS) share inclined also by (16.92%) and closed at the level of (1.52) dollars with affected trades of (2.44) million shares valuing (3.46) million dollars. While (AIB) shares achieved a (1.63%) rise and closed at the level of (1.25) dollars.



Service Sector:

The service sector share declined by (1.70%) to be considered the sector which declined the most for the month of January. (PALTEL) retreated by (1.21%) and closed at the level of (4.90) dinars with affected trades of (1.30) million dollars forming (60%) of PSE total value for this sector. The (UCI) share drew attention to the market on 21-01-2007 after forming (28%) of the overall trade value in its sector after trade shares of (3.08) million shares valuing (1) dollar per share. It closed at the level of (1.26) dollars. (ARE) shares inclined this month after achieving a (61%) rise with weak trade shares not more than (55) thousand dollars.



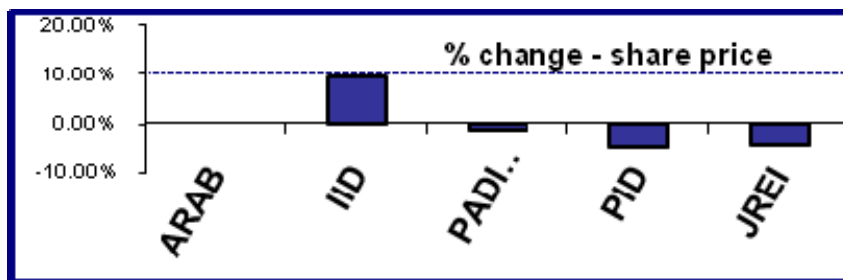
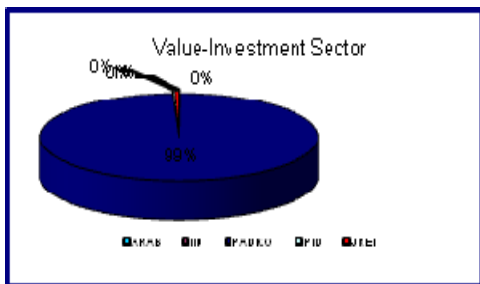
Investment Sector:

The Investment Sectors share declined by (1.23%) closing at the level of (49.12) points after forming (20.47%) of the PSE total value this month. (PADICO) retreated by (1.34%) and closed at the level of (2.94) dollars after active trading of (5.15) million shares valuing trading of (5.15) million shares.

www.sahem-inv.com

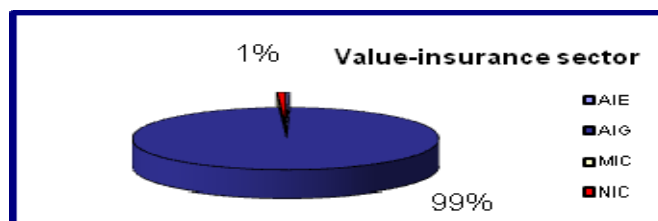
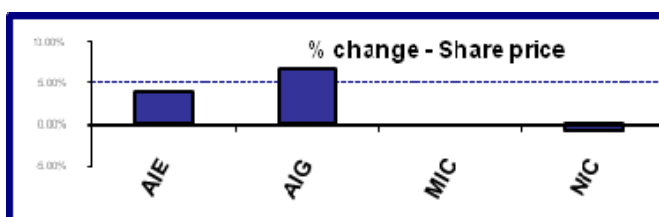
Main Office-Sahem Trading & Investment Co.-P.O Box: 2187 Ramallah-Phone: 02-2965710
Gaza-Phone: 08-2869660- Bethlehem-Phone: 02-2744672-Khan Younes-Phone: 08-2064910

valuing (15.5) million dollars to form more than (99%) of the PSE total value for this sector.



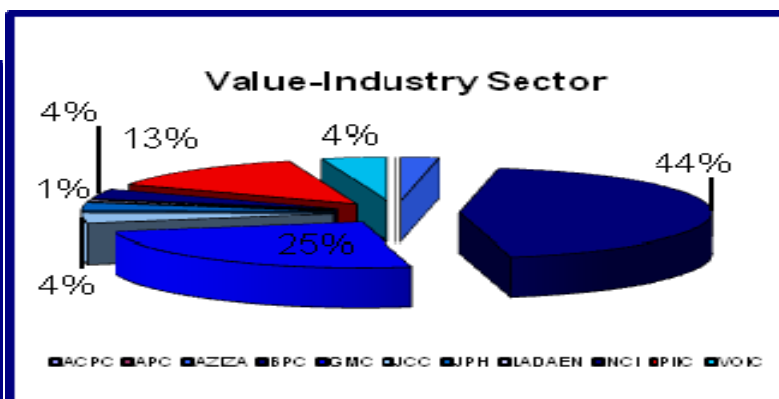
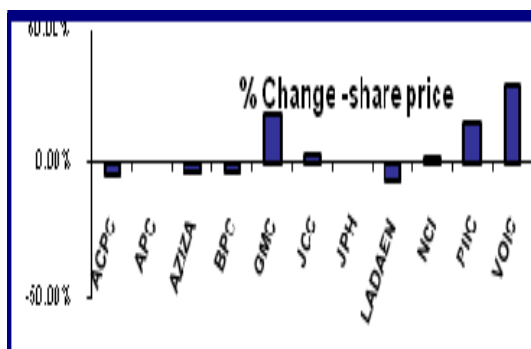
Insurance Sector:

The insurance sector's share inclined by (3.87%) after forming (10%) of the PSE total trading value for this month. This by the help of (AIG) shares which formed (99%) of the total trading value for this sector after trade shares of (2.29) million shares valuing (7.57) million dollars. Its share accomplished a (6.67%) rise and closed at the level of (3.20) dollars. Reminding you that (AIG) was the first of the listed companies to disclose its financial data for the year 2006 which revealed a (1.62) million dollar net profit gain after taxes.



Industry Sector:

The sectors index achieved a (3.06) rise since it was the lowest of the sectors. Its PSE total trading value was (6.31%). Trading for (BPC) was for (0.27) million shares valuing (2.14) million dollars to form (44%) of the total trading value for this sector. Later on it declined to (3.23%) and closed at the level of (5.40) dinars. (GMC) share inclined by (17%) closing at a (1.25) dinar level.



Index		Closing	opening	Points Change	%change			
AIQuds		610.58	605.00	5.58	0.92%			
Company symbol	No. of Traded shares	value (JOD)	No of Contracts	Opened price	Closed price	Change Value	% Change	Value Dollar
ACPC	10	13	1	1.31	1.25	-4.58%	-0.06	18.34862
AHC	60,200	67,531	65	1.17	1.10	-5.98%	-0.07	95315.46
AIB	640,275	566,976	524	1.23	1.25	1.63%	0.02	800248.4
AIE	13,236	18,265	19	1.31	1.36	3.82%	0.05	25779.82
AIG	2,290,732	5,369,088	643	3.00	3.20	6.67%	0.20	7578106
APC	0	0	0	0.84	0.84	0.00%	0.00	0
ARAB	0	0	0	1.11	1.11	0.00%	0.00	0
ARE	41,599	38,481	78	0.67	1.08	61.19%	0.41	54313.34
AZIZA	67,280	83,132	50	1.20	1.16	-3.33%	-0.04	117335.2
BOP	5,124,033	20,069,046	2,043	4.63	5.63	21.60%	1.00	28326106
BPC	276,074	1,520,453	214	5.58	5.40	-3.23%	-0.18	2146017
CBP	437,484	249,763	124	0.85	0.85	0.00%	0.00	352523.6
GMC	724,897	845,551	661	1.06	1.25	17.92%	0.19	1193438
HOTEL	0	0	0	1.94	1.94	0.00%	0.00	0
IID	18,420	11,903	31	0.63	0.69	9.52%	0.06	16800.28
JCC	30,025	127,881	64	4.09	4.21	2.93%	0.12	180495.4
JPH	16,532	97,798	60	6.05	6.00	-0.83%	-0.05	138035.3
JREI	74,789	52,988	1	1.05	1.00	-4.76%	-0.05	74788.99
LADAEN	22,830	18,148	40	0.83	0.77	-7.23%	-0.06	25614.68
MIC	200	190	2	0.93	0.93	0.00%	0.00	268.1722
NCI	188,712	124,710	199	0.66	0.67	1.52%	0.01	176019.8
NIC	6,228	43,307	29	7.00	6.95	-0.71%	-0.05	61124.91
PADICO	5,151,915	11,013,542	3,144	2.98	2.94	-1.34%	-0.04	15544872
PALTEL	1,301,644	6,551,394	1,471	4.96	4.90	-1.21%	-0.06	9246851
PEC	224,347	191,470	325	1.20	1.20	0.00%	0.00	270247
PIB	0	0	0	1.14	1.14	0.00%	0.00	0
PIBC	41,576	78,552	92	2.92	2.60	-10.96%	-0.32	110870.9
PID	33,828	26,523	15	0.82	0.78	-4.88%	-0.04	37435.43
PIIC	510,610	461,926	448	0.85	0.98	15.29%	0.13	651977.4
PLAZA	96,514	74,085	95	0.92	0.75	-18.48%	-0.17	104566
PRICO	702,723	878,684	538	1.32	1.24	-6.06%	-0.08	1240203
QUDS	2,442,884	2,453,105	455	1.30	1.52	16.92%	0.22	3462392
UCI	3,656,405	3,080,249	989	1.00	1.26	26.00%	0.26	4347564
VOIC	43,782	144,769	95	2.74	3.52	28.47%	0.78	204331.7

www.sahem-inv.com

Main Office-Sahem Trading & Investment Co.-P.O Box: 2187 Ramallah-Phone: 02-2965710
Gaza-Phone: 08-2869660- Bethlehem-Phone: 02-2744672-Khan Younes-Phone: 08-2064910