



PSE Outlook Q2 2010

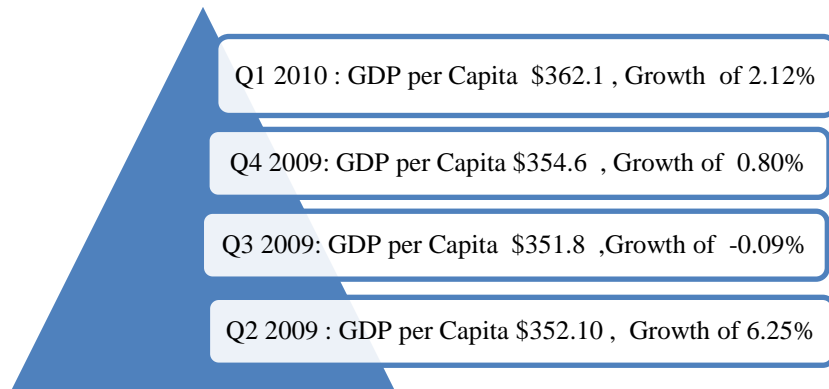
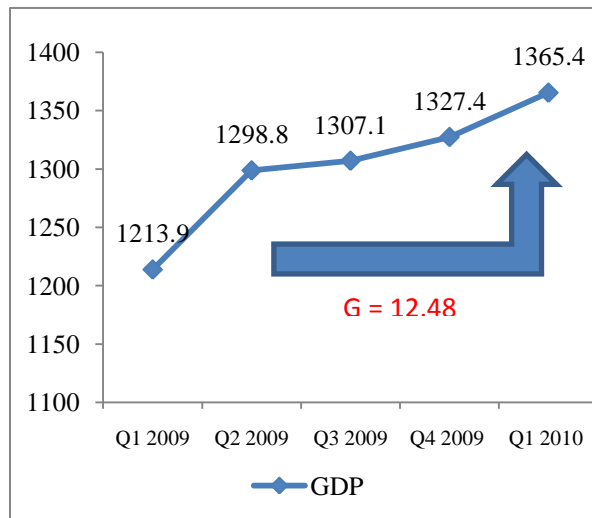
July 06 , 2010

MACRO INDICATORS

According to Palestine Central Bureau of Statistics (PCBS) report, GDP in Palestine grew by %12.48 in Q1 2010 compared to Q1 2009, and by %2.86 compared to Q4 2009.

It has been reported also that the main economic activities with relatively high contribution rates in GDP, grew significantly.

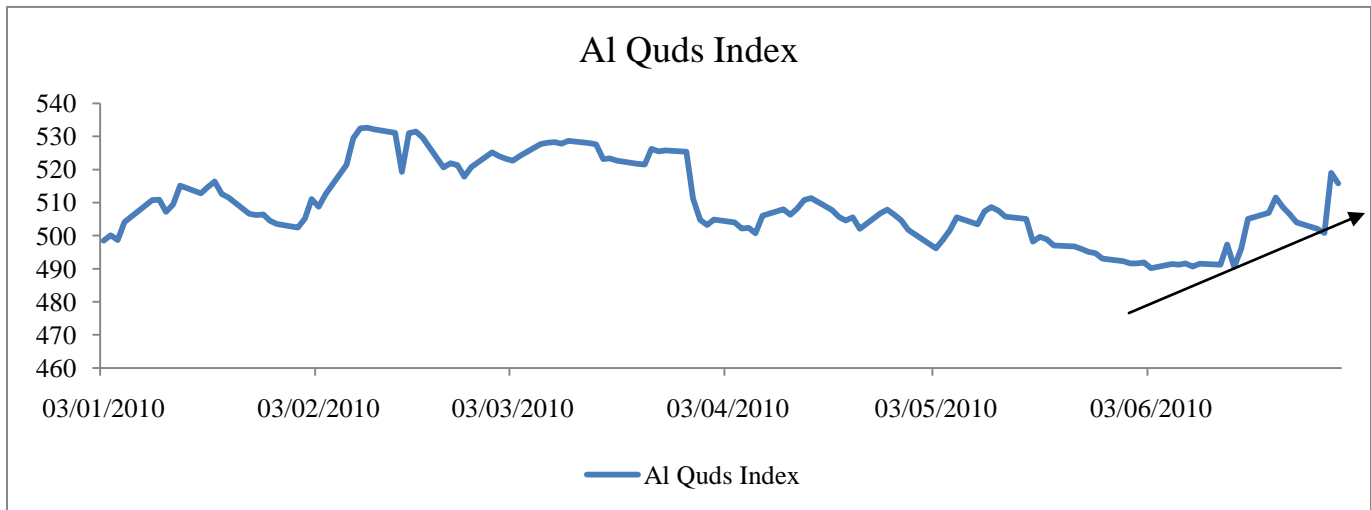
The growth in the value added of Financial Intermediation reached %21.55 in Q1 2010 compared to Q1 2009, and %2.48 compared to Q4 2009.



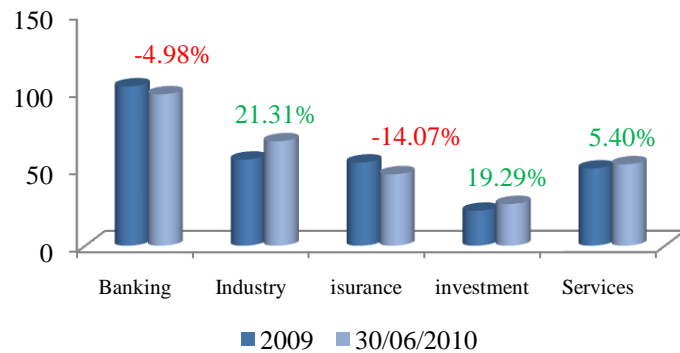
According to PCBS, GDP per capita reached \$362.1 in Q1 2010 compared to \$354.6 in 4Q 2009; marking a change of %2.12.

On the other hand, GDP per capita grew by %9.26 in Q1 2010 comparing to Q1 2009, basing on the population enumeration of 2007 and estimations for the followed years.

PSE PERFORMANCE UNTIL JUNE 2010



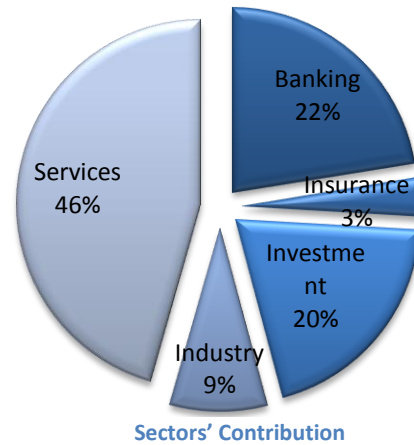
Period	Closing Value
January 30	502.43
February 30	525.18
March 30	503.17
April 30	501.72
May 30	491.58
June 30	515.84



Sector	No. of listed Companies		No. of transactions		Trading Volume		Trading Value	
	30-Jun-09	30-Jun-10	30-Jun-09	30-Jun-10	30-Jun-09	30-Jun-10	30-Jun-09	30-Jun-10
Banking	6	7	13,842	11,033	47,279,638	45,307,641	100,210,241	61,179,109
Insurance	5	5	1,175	2,322	2,744,697	8,135,800	2,733,616	6,569,899
Investment	8	8	21,504	23,790	68,791,299	67,358,288	88,928,561	92,561,713
Industry	10	10	3,821	4,058	6,287,684	6,595,125	15,825,985	13,853,917
Services	8	11	13,117	9,492	20,777,427	20,144,258	126,861,933	109,255,358
Total	37	41	53,459	50,695	145,880,745	147,541,112	334,560,336	283,419,996

PSE MARKET CAPITALIZATION

Sector	Market Capitalization (USD)	
	30-Jun-09	30-Jun-10
Banking	515,961,191	571,852,391
Insurance	90,688,530	87,369,122
Investment	435,808,699	507,970,272
Industry	172,880,930	217,508,567
Services	1,196,748,972	1,160,643,583
Total	2,412,088,322	2,545,343,935



TOP 5 BY MARKET CAP

Company	Symbol	Market Cap 30-Jun-10
PALESTINE TELECOMMUNICATIONS	PALTEL	1,015,498,773
PALESTINE DEVELOPMENT & INVESTMENT	PADICO	347,500,000
BANK OF PALESTINE	BOP	345,000,000
BIRZEIT PHARMACEUTICALS	BPC	62,974,602
PALESTINE REAL ESTATE INVESTMENT	PRICO	60,976,882

TOP GAINERS / LOSERS

Top Gainers			
Symbol	Dec-09	30-Jun-10	Change
PIIC	0.7	1.6	128.57%
AZIZA	1.35	2.95	118.52%
LADAEN	0.3	0.61	103.33%
NCI	0.29	0.53	82.76%
ARE	0.54	0.92	70.37%

Top Losers			
Symbol	Dec-09	2010-06-30	Change
AIG	0.83	0.58	-30.12%
NIC	4.41	3.39	-23.13%
TRUST	2.85	2.35	-17.54%
PIBC	1.2	1.01	-15.83%
PCB	0.8	0.7	-12.50%

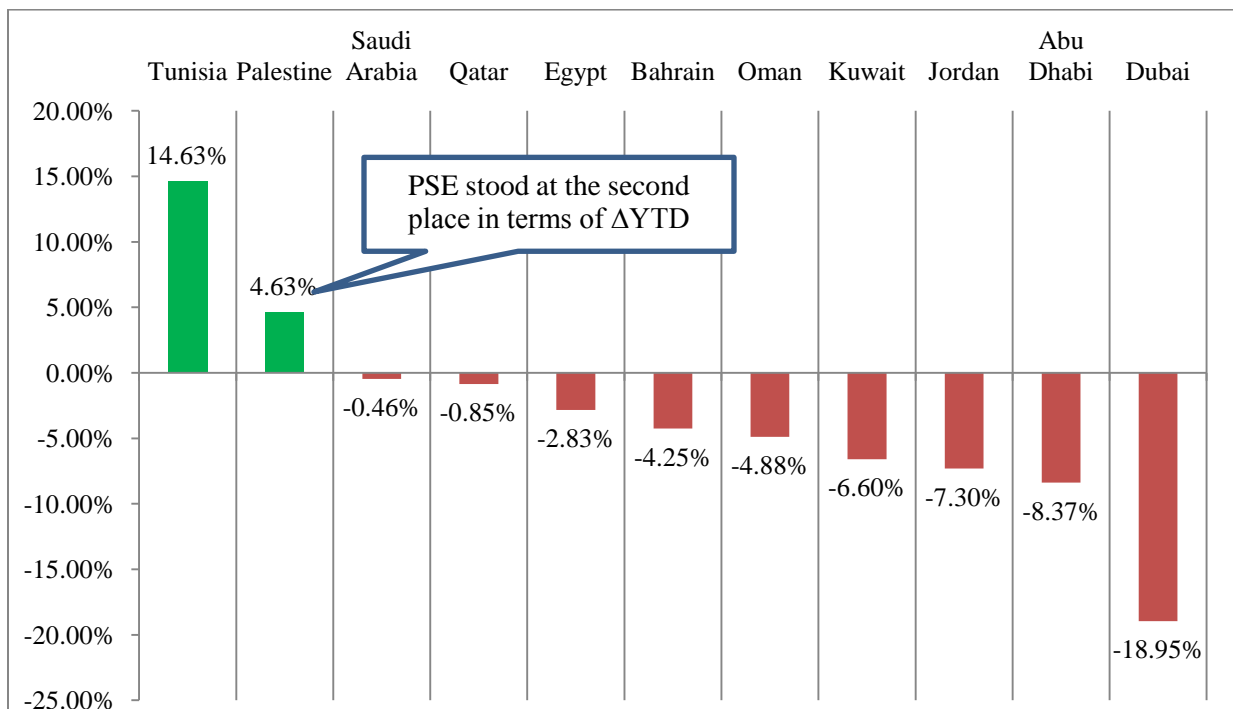
PSE VS. REGIONAL MARKETS

Market	Index	Market Index		
		Opening	Closing	Δ (%)
Tunisia	TUNINDEX	4287	4914	14.63%
<i>Palestine</i>	<i>Al Quds</i>	493	515.84	4.63%
Saudi Arabia	TASI	6122	6094	-0.46%
Qatar	QE	6959	6900	-0.85%
Egypt	EGX30	6209	6033	-2.83%
Bahrain	BSE	1458	1396	-4.25%
Oman	MSM	6369	6058	-4.88%
Kuwait	KSE	7005	6543	-6.60%
Jordan	ASE	2534	2349	-7.30%
Abu Dhabi	ADX	2744	2514	-8.37%
Dubai	DFM	1804	1462	-18.95%

Palestine Securities Exchange stood at second place among other regional markets in terms of YTD change.

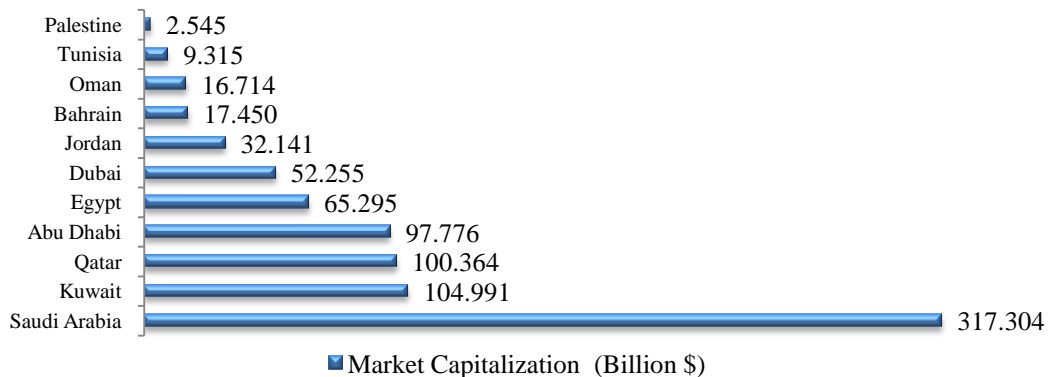
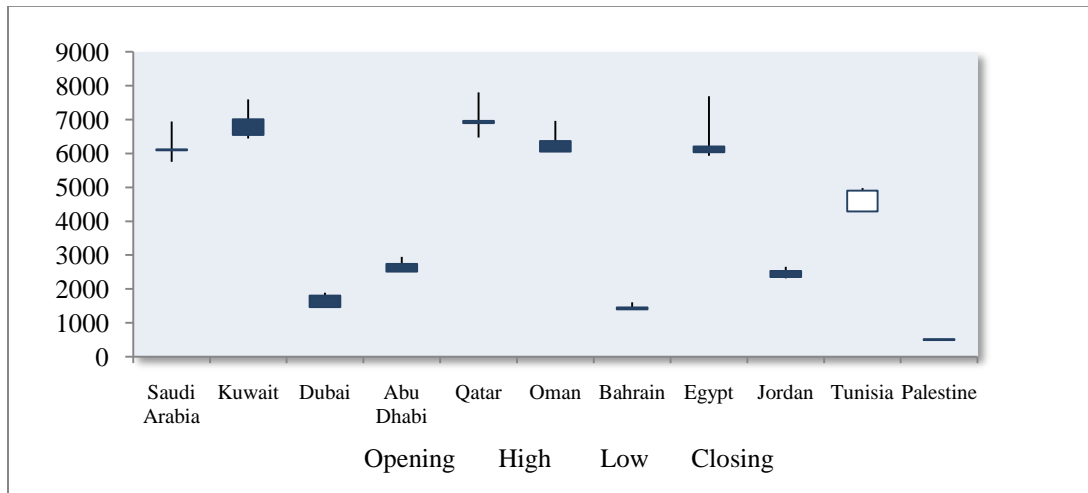
Al Quds index recorded a growth of %4.63 in Q2 2010 comparing to the end of 2009.

Tunisia Market tops regional stock markets' indices rising up %14.63, while Dubai market was the top loser by %18.95.



MARKETS' INDICES FACTS FROM JAN, 01 – JUN, 30

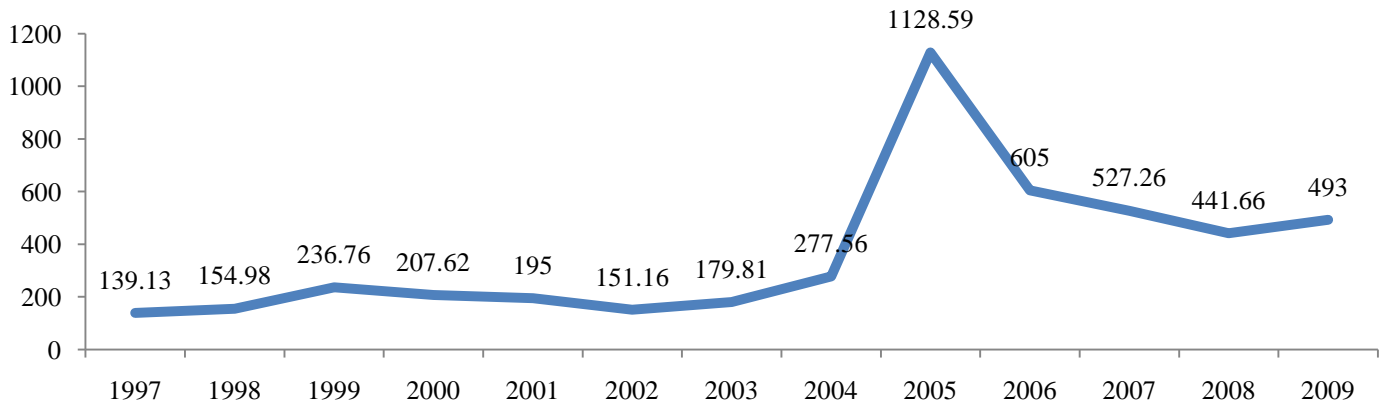
Market	Opening	High	Low	Closing
Saudi Arabia	6122	5750.39	6939.33	6094
Kuwait	7005	6446.00	7597.60	6543
Dubai	1804	1458.70	1887.21	1462
Abu Dhabi	2744	2501.64	2944.45	2514
Qatar	6959	7806.66	6472.25	6900
Oman	6369	6047.60	6959.03	6058
Bahrain	1458	1390.81	1605.98	1396
Egypt	6209	7693.38	5936.55	6033
Jordan	2534	2659.40	2319.11	2349
Tunisia	4287	4977.36	4295.02	4904
Palestine	493	534.05	490.09	515.84



APPENDIX

Year	No. of Trading Sessions	Trading Volume	Daily Average Turnover-Volume	Trading Value \$	Daily Average Turnover-Value	No. of transactions	Daily Average Turnover-Transactions	Market Capitalization \$
1997	66	10,000,276	151,519	25,158,471	381,189	1,957	30	529,057,368
1998	100	16,782,498	167,825	68,642,344	686,423	7,639	76	587,876,243
1999	146	68,892,607	471,867	150,243,919	1,029,068	10,625	73	848,935,775
2000	211	93,351,075	442,422	188,982,443	895,651	20,143	95	766,018,025
2001	161	33,456,535	207,805	74,528,351	462,909	8,205	51	722,631,785
2002	100	18,666,938	186,669	45,084,654	450,847	4,579	46	576,593,466
2003	223	40,350,788	180,945	58,326,445	261,554	10,552	47	650,468,928
2004	244	103,642,845	424,766	200,556,709	821,954	27,296	112	1,096,525,380
2005	246	369,567,295	1,502,306	2,096,178,223	8,521,050	166,807	678	4,457,227,305
2006	238	222,689,351	935,670	1,067,367,951	4,484,739	150,592	633	2,728,811,088
2007	248	299,422,814	1,207,350	813,469,091	3,280,117	157,300	634	2,474,679,018
2008	244	339,168,807	1,390,036	1,185,204,211	4,857,394	152,319	624	2,123,057,098
2009	246	238,877,373	971,046	500,393,398	2,034,120	88,838	361	2,375,366,531
Total	2,473	1,854,869,202	750,048	6,474,136,210	2,617,928	806,852	326	

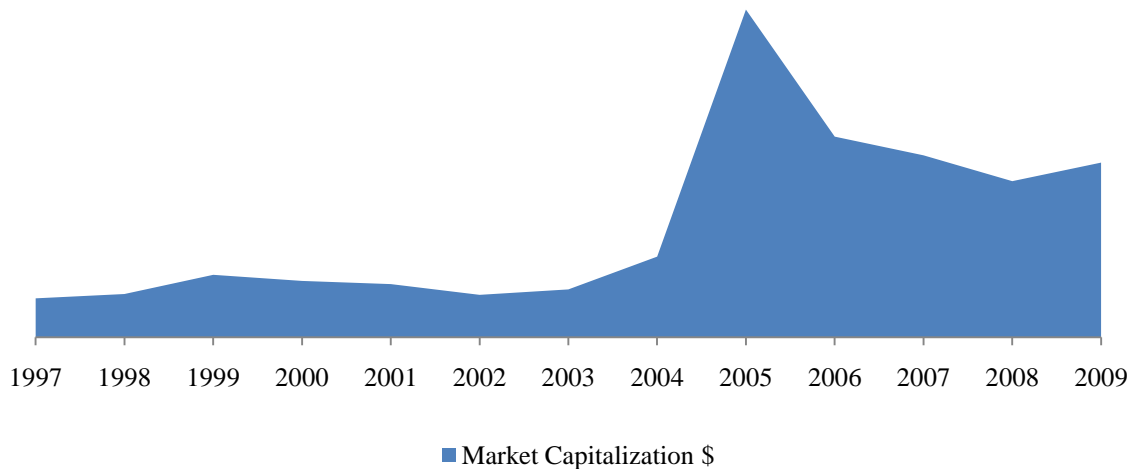
Alquds Index Performance



SECTORS' INDICES

year	Banking Index	Industry Index	Insurance Index	Investment Index	Services Index
2006	95.22	72.49	129.76	49.79	50.14
2007	81.52	66.1	77.5	38.27	48.26
2008	78.74	54.38	57.79	22.11	46.92
2009	102.83	55.56	53.65	22.55	49.85

Market Capitalization \$



For further information, please contact research department at Sahem Trading & Investment Company:

Sahem Trading & Investment Co,
 Ramallah, Palestine
 P.O.Box 2187
 Direct line: +970-2-2968830
 +972-2-2968830
Research@sahem-inv.com

Majd Khalifeh

Mkhalifeh@sahem-inv.com

Haitham Najjar

Hnajjar@sahem-Inv.com

DISCLAIMER

Disclaimer: This report is not an offer to buy or sell nor a solicitation to buy or sell any of the securities mentioned within. The information contained in this report were prepared using information available to the public and sources Sahem Trading & Investment Co believes to be reliable. Sahem Trading & Investment Co does not guarantee the accuracy of the information contained within this report and accepts no responsibility or liability for losses or damages incurred as a result of investment decisions taken based on information provided or referred to in this report. Any analysis of historical facts and data is for information purposes only and past performance of any company or security is no guarantee or indication of future results.